

# Personal Fishing Record

Name \_\_\_\_\_

Address \_\_\_\_\_

\_\_\_\_\_

Email Address \_\_\_\_\_

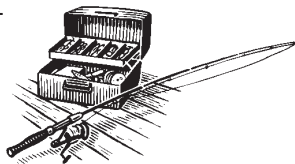
Phone \_\_\_\_\_

Year \_\_\_\_\_

Book Number \_\_\_\_\_



Agriculture and  
Forestry



Personal information on this Angling Log Book is collected under section 31(c) of the *Freedom of Information and Protection of Privacy Act* R.S.P.E.I. 1988, c. F-15.01 as it relates directly to the enforcement requirements of angling regulations under the P.E.I. Wildlife Conservation Act .

If you have any questions about this collection of personal information, you may contact: Rosanne MacFarlane, Freshwater Fisheries Biologist, Forests, Fish and Wildlife Division, Box 2000 Charlottetown PE C1A 7N8 (902) 368-6082.

## **Important Addresses and Telephone Numbers**

For enforcement emergencies (i.e. reporting a poacher)  
(902) 368-4808

For environmental emergencies  
1-800-565-1633

PEI Crime Stoppers  
1-800-222-TIPS (8477)

PEI Department of Agriculture and Forestry  
Forests, Fish and Wildlife Division  
PO Box 2000  
Charlottetown PE C1A7N8  
(902) 368-4683

## Instructions

**Anglers fishing the extended season are required to maintain and submit a log book. Failure to do so may result in a loss of angling privileges.**

**NOTE: This is your personal fishing record. Please record only fish you caught yourself. Please record all trips and make an entry in your book even if you did not catch fish.**

Accurate records of anglers' catches and the time spent fishing are needed to manage the fisheries of all inland waters. Please keep this booklet with you and carry a ruler to accurately measure the fish you catch.

**Date:** Fill in the day, month and year of your trip. Fill out one page per day and per location. For example, if you fish in the Dunk River and Mill River on the same day, fill out two pages (one for each location).

**Name of river or pool:** Fill in the name of the river or pool you are fishing. For example: Morell River, Dunk River - Steel Bridge.

**Total hours spent fishing:** Record the actual fishing time to the nearest  $\frac{1}{2}$  hour. Do not include any time off for lunch, travel etc.

**Species:** Indicate species such as Atlantic salmon, brook (speckled) trout, rainbow trout, brown trout, white perch.

**Length:** Measure the fish from the tip of the snout to the fork of the tail. Indicate inches (in) or centimetres (cm).

**Tagged fish:** Occasionally, management or research studies involve the use of tags to identify fish. Tags are usually placed behind and below the large dorsal fin on the back of the fish. Please record the identification number from the tag. Refer to the angling summary for details of any fish tagging studies currently underway.

**Remarks:** Optional. Record any details of weather, fishing tackle used or other observations.

**WHEN THE FISHING SEASON ENDS:** Please return your personal fishing record to:

Forests, Fish and Wildlife Division  
PEI Department of Agriculture & Forestry  
PO Box 2000  
Charlottetown PE  
C1A7N8

OR return the booklet to any Access PEI office.

If you wish to have your book returned once the survey is completed, please contact our office at the above address (902) 368-4683.

### **WIN a \$50 Gift Certificate**

**All anglers who complete and submit angling logbooks will have their names entered in a draw. The winner will receive a \$50 gift card. To be eligible, books must be submitted before November 30<sup>th</sup>.**

## Notes

For further information on the extended angling season and for general angling regulations, please refer to the Angling Summary

***<http://www.gov.pe.ca/forestry/summary>***

*Your efforts in contributing to the better management of our recreational fishery are sincerely appreciated.*



Date September 19, 2014 River Pool Montague (below Knox's)

Total Hours Spent Fishing 3

Primary Species Targeted Rainbow Trout

Record of Fish Kept or Released		
Species	Length	
	Kept	Released
<i>brook trout</i>		<i>30 cm</i>
<i>brook trout</i>		<i>24 cm</i>
<i>rainbow trout</i>	<i>40 cm</i>	
<i>rainbow trout</i>		<i>42 cm*</i>

Comments:

*Heavy shower in afternoon.*

*\*Rainbow trout that was released had a red tag #109*

Date \_\_\_\_\_ River Pool \_\_\_\_\_

Total Hours Spent Fishing \_\_\_\_\_

Primary Species Targeted \_\_\_\_\_

<b>Record of Fish Kept or Released</b>		
<b>Species</b>	<b>Length</b>	
	<b>Kept</b>	<b>Released</b>

Comments:

Date \_\_\_\_\_ River Pool \_\_\_\_\_

Total Hours Spent Fishing \_\_\_\_\_

Primary Species Targeted \_\_\_\_\_

<b>Record of Fish Kept or Released</b>		
<b>Species</b>	<b>Length</b>	
	<b>Kept</b>	<b>Released</b>

Comments:



Date \_\_\_\_\_ River Pool \_\_\_\_\_

Total Hours Spent Fishing \_\_\_\_\_

Primary Species Targeted \_\_\_\_\_

<b>Record of Fish Kept or Released</b>		
<b>Species</b>	<b>Length</b>	
	<b>Kept</b>	<b>Released</b>

Comments:

Date \_\_\_\_\_ River Pool \_\_\_\_\_

Total Hours Spent Fishing \_\_\_\_\_

Primary Species Targeted \_\_\_\_\_

<b>Record of Fish Kept or Released</b>		
<b>Species</b>	<b>Length</b>	
	<b>Kept</b>	<b>Released</b>

Comments:

Date \_\_\_\_\_ River Pool \_\_\_\_\_

Total Hours Spent Fishing \_\_\_\_\_

Primary Species Targeted \_\_\_\_\_

<b>Record of Fish Kept or Released</b>		
<b>Species</b>	<b>Length</b>	
	<b>Kept</b>	<b>Released</b>

Comments:

Date \_\_\_\_\_ River Pool \_\_\_\_\_

Total Hours Spent Fishing \_\_\_\_\_

Primary Species Targeted \_\_\_\_\_

<b>Record of Fish Kept or Released</b>		
<b>Species</b>	<b>Length</b>	
	<b>Kept</b>	<b>Released</b>

Comments:

Date \_\_\_\_\_ River Pool \_\_\_\_\_

Total Hours Spent Fishing \_\_\_\_\_

Primary Species Targeted \_\_\_\_\_

<b>Record of Fish Kept or Released</b>		
<b>Species</b>	<b>Length</b>	
	<b>Kept</b>	<b>Released</b>

Comments:

Date \_\_\_\_\_ River Pool \_\_\_\_\_

Total Hours Spent Fishing \_\_\_\_\_

Primary Species Targeted \_\_\_\_\_

<b>Record of Fish Kept or Released</b>		
<b>Species</b>	<b>Length</b>	
	<b>Kept</b>	<b>Released</b>

Comments:

Date \_\_\_\_\_ River Pool \_\_\_\_\_

Total Hours Spent Fishing \_\_\_\_\_

Primary Species Targeted \_\_\_\_\_

<b>Record of Fish Kept or Released</b>		
<b>Species</b>	<b>Length</b>	
	<b>Kept</b>	<b>Released</b>

Comments:

Date \_\_\_\_\_ River Pool \_\_\_\_\_

Total Hours Spent Fishing \_\_\_\_\_

Primary Species Targeted \_\_\_\_\_

<b>Record of Fish Kept or Released</b>		
<b>Species</b>	<b>Length</b>	
	<b>Kept</b>	<b>Released</b>

Comments:



Date \_\_\_\_\_ River Pool \_\_\_\_\_

Total Hours Spent Fishing \_\_\_\_\_

Primary Species Targeted \_\_\_\_\_

<b>Record of Fish Kept or Released</b>		
<b>Species</b>	<b>Length</b>	
	<b>Kept</b>	<b>Released</b>

Comments:

Date \_\_\_\_\_ River Pool \_\_\_\_\_

Total Hours Spent Fishing \_\_\_\_\_

Primary Species Targeted \_\_\_\_\_

<b>Record of Fish Kept or Released</b>		
<b>Species</b>	<b>Length</b>	
	<b>Kept</b>	<b>Released</b>

Comments:

Date \_\_\_\_\_ River Pool \_\_\_\_\_

Total Hours Spent Fishing \_\_\_\_\_

Primary Species Targeted \_\_\_\_\_

<b>Record of Fish Kept or Released</b>		
<b>Species</b>	<b>Length</b>	
	<b>Kept</b>	<b>Released</b>

Comments:

Date \_\_\_\_\_ River Pool \_\_\_\_\_

Total Hours Spent Fishing \_\_\_\_\_

Primary Species Targeted \_\_\_\_\_

<b>Record of Fish Kept or Released</b>		
<b>Species</b>	<b>Length</b>	
	<b>Kept</b>	<b>Released</b>

Comments:

Date \_\_\_\_\_ River Pool \_\_\_\_\_

Total Hours Spent Fishing \_\_\_\_\_

Primary Species Targeted \_\_\_\_\_

<b>Record of Fish Kept or Released</b>		
<b>Species</b>	<b>Length</b>	
	<b>Kept</b>	<b>Released</b>

Comments:

Date \_\_\_\_\_ River Pool \_\_\_\_\_

Total Hours Spent Fishing \_\_\_\_\_

Primary Species Targeted \_\_\_\_\_

<b>Record of Fish Kept or Released</b>		
<b>Species</b>	<b>Length</b>	
	<b>Kept</b>	<b>Released</b>

Comments:

Date \_\_\_\_\_ River Pool \_\_\_\_\_

Total Hours Spent Fishing \_\_\_\_\_

Primary Species Targeted \_\_\_\_\_

<b>Record of Fish Kept or Released</b>		
<b>Species</b>	<b>Length</b>	
	<b>Kept</b>	<b>Released</b>

Comments:

Date \_\_\_\_\_ River Pool \_\_\_\_\_

Total Hours Spent Fishing \_\_\_\_\_

Primary Species Targeted \_\_\_\_\_

<b>Record of Fish Kept or Released</b>		
<b>Species</b>	<b>Length</b>	
	<b>Kept</b>	<b>Released</b>

Comments:



Date \_\_\_\_\_ River Pool \_\_\_\_\_

Total Hours Spent Fishing \_\_\_\_\_

Primary Species Targeted \_\_\_\_\_

<b>Record of Fish Kept or Released</b>		
<b>Species</b>	<b>Length</b>	
	<b>Kept</b>	<b>Released</b>

Comments:

Date \_\_\_\_\_ River Pool \_\_\_\_\_

Total Hours Spent Fishing \_\_\_\_\_

Primary Species Targeted \_\_\_\_\_

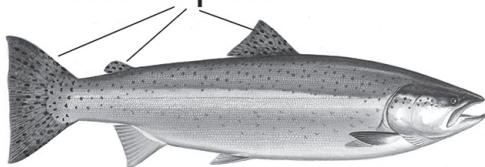
<b>Record of Fish Kept or Released</b>		
<b>Species</b>	<b>Length</b>	
	<b>Kept</b>	<b>Released</b>

Comments:

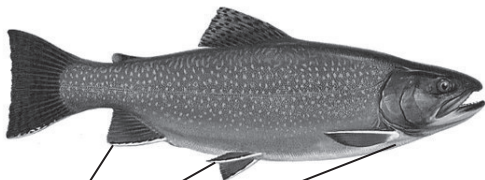


Dark spots

Atlantic Salmon



Rainbow Trout



white on edge  
of fins

Brook Trout

## Handling Fish with Respect

All fish should be treated humanely, whether they are being added to your creel or about to be released. When retaining a fish, kill it quickly and humanely. It is mandatory on Prince Edward Island to kill your fish immediately or release it back to the wild. Fish cannot be kept alive on stringers or in live wells. Keep your catch cool to ensure that the flesh will be of optimum quality. When releasing fish, take steps to reduce stress in the fish and give it the best chance of survival.

- Use the right gear:
  - ▶ Single barbless hooks are mandatory in the extended season. Barbless or pinched hooks are easier to remove than barbed hooks.
  - ▶ Single barbless fly only on the Morell and Mill River. For all other rivers, barbless single hook lures or flies are permitted.
- Minimize handling. Do not play the fish until belly-up. Retrieve your fish quickly and release it immediately
- Keep the fish in the water as much as possible. Avoid touching the gills and eyes. Do not squeeze small fish.
- If a photo is required, have the camera ready and remove the fish for as short a time as possible.
- Use only a knotless mesh net
- Remove the hook carefully. Long-nosed pliers work better than numb slippery fingers.
- Cut the line and sacrifice the hook rather than the fish.
- Revive if necessary. Hold the fish gently in a natural swimming position, facing upstream until it revives and can swim normally.

For an excellent video on catch and release fishing, visit the Atlantic Salmon Federation website <http://www.asf.ca/live-release.html>